

Сетевые контроллеры SALICRU

Архангельск (8182)63-90-72
Астана (7172)727-132
Астрахань (8512)99-46-04
Барнаул (3852)73-04-60
Белгород (4722)40-23-64
Брянск (4832)59-03-52
Владивосток (423)249-28-31
Волгоград (844)278-03-48
Вологда (8172)26-41-59
Воронеж (473)204-51-73
Екатеринбург (343)384-55-89
Иваново (4932)77-34-06

Ижевск (3412)26-03-58
Иркутск (395)279-98-46
Казань (843)206-01-48
Калининград (4012)72-03-81
Калуга (4842)92-23-67
Кемерово (3842)65-04-62
Киров (8332)68-02-04
Краснодар (861)203-40-90
Красноярск (391)204-63-61
Курск (4712)77-13-04
Липецк (4742)52-20-81

Киргизия (996)312-96-26-47

Магнитогорск (3519)55-03-13
Москва (495)268-04-70
Мурманск (8152)59-64-93
Набережные Челны (8552)20-53-41
Нижний Новгород (831)429-08-12
Новокузнецк (3843)20-46-81
Новосибирск (383)227-86-73
Омск (3812)21-46-40
Орел (4862)44-53-42
Оренбург (3532)37-68-04
Пенза (8412)22-31-16

Россия (495)268-04-70

Пермь (342)205-81-47
Ростов-на-Дону (863)308-18-15
Рязань (4912)46-61-64
Самара (846)206-03-16
Санкт-Петербург (812)309-46-40
Саратов (845)249-38-78
Севастополь (8692)22-31-93
Симферополь (3652)67-13-56
Смоленск (4812)29-41-54
Сочи (862)225-72-31
Ставрополь (8652)20-65-13

Казахстан (772)734-952-31

Сургут (3462)77-98-35
Тверь (4822)63-31-35
Томск (3822)98-41-53
Тула (4872)74-02-29
Тюмень (3452)66-21-18
Ульяновск (8422)24-23-59
Уфа (347)229-48-12
Хабаровск (4212)92-98-04
Челябинск (351)202-03-61
Череповец (8202)49-02-64
Ярославль (4852)69-52-93

<http://salicru.nt-rt.ru> || sfc@nt-rt.ru

ETHERNET/SNMP/NIMBUS CLOUD NETWORK CARDS

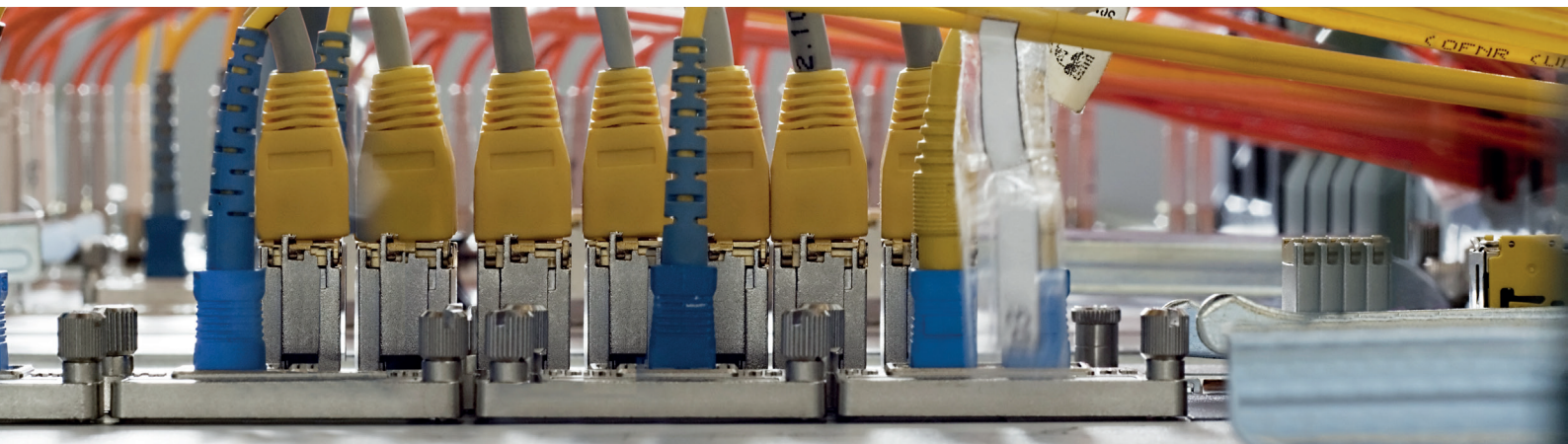
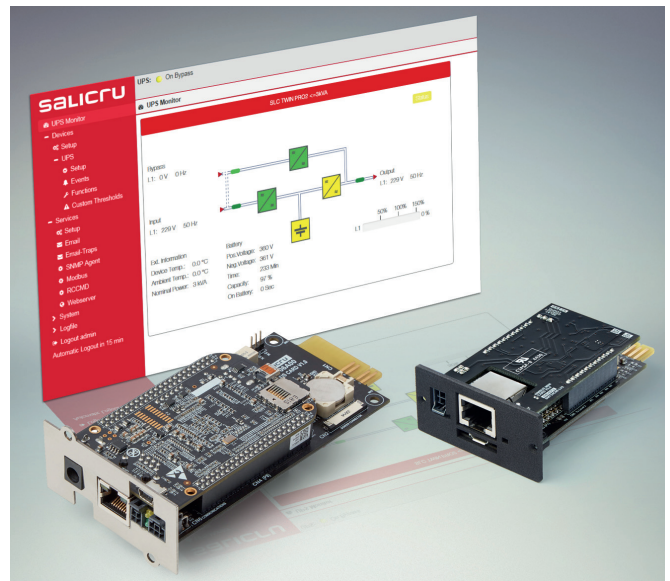
Ordered closure of servers / MQTT IOT

NIMBUS cloud / Ethernet / SNMP Network Cards: The best add-ons to protect your computer network

In case of any electrical problem - supply cut, voltage peak or line drop - the main function of an Uninterruptible Power Supply (UPS) is to protect the connected loads and continue supplying power to your computer network, either from the batteries or by voltage regulation. New IoT technologies, based on communications through MQTT channels, allow us to have a WEB application in the CLOUD so we can manage our equipment from anywhere with an Internet connection.

It is very important to monitor the UPS to see whether it is working properly at all times, so that it can notify us of its correct operation and/or manage the complete and ordered closure of our private computer network. This is why the installation of a local Ethernet Network card in the UPS or a NIMBUS Card is necessary, so that it can autonomously manage the different functions required by our computer network.

Salicru offers a complete range of Ethernet/SNMP/NIMBUS network cards to meet our customers' requirements.

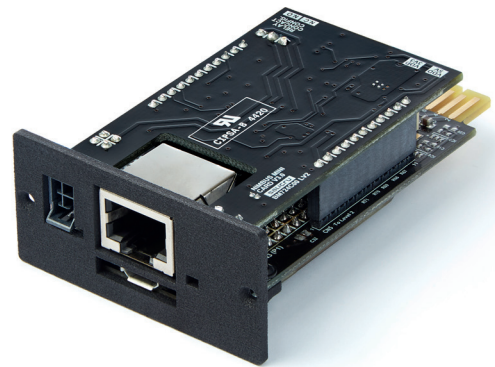
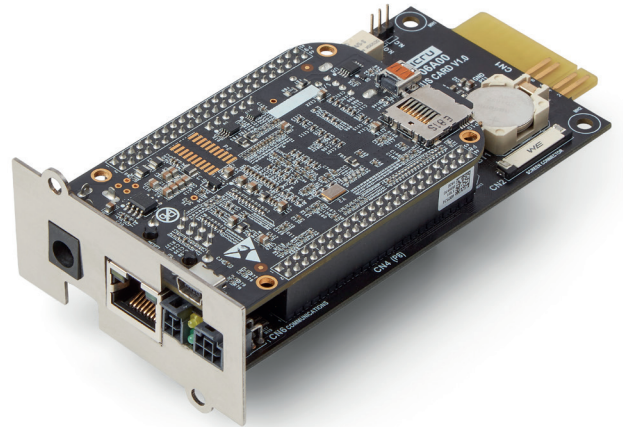


Nimbus Adapter / SNMP web adapter

Salicru's **NIMBUS** cards are designed and developed to offer different communication services to Salicru's customers. Its Linux Embedded operating system allows simultaneous management of 'Panel Web, Telemonitoring, SNMP, Modbus TCP and Server Shutdown' services.

It includes the following features:

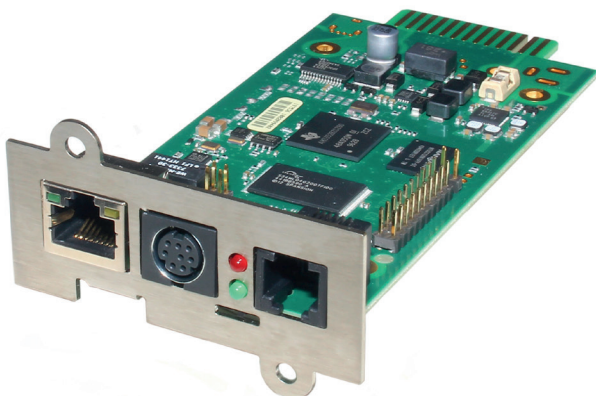
- **Remote upgrade:** to manage new UPS models and additional services.
- **Panel Web:** visualisation of the available measurements, variables and alarms using a block diagram.
- **Telemonitoring:** Salicru's cloud connection functionality.
- **SNMP:** compatibility with UPS in accordance with the RFC1628 standard, for monitoring via Nagios software, Zabbix, etc.
- **MODBUS TCP:** display of measurements, variables and alarms for connection to PLC or SCADA software.
- **Server shutdown:** sending shutdown orders, using RCCMD (optional) software.



Ethernet Adapter / SNMP WEB Adapter

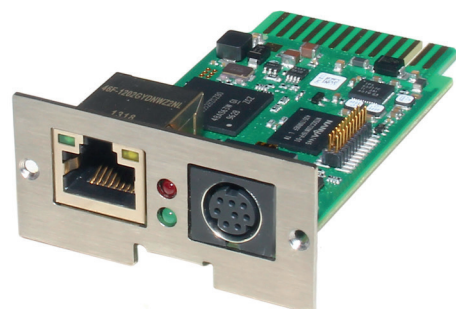
The functions incorporated in these cards will be able to satisfy the most demanding requirements of IT administrators. They are quick to configure, which facilitates your work, have extensive options for monitoring and personalisation of events, complete off/on options (wake on lan) of our physical or virtual server farm, SNMP (v2, v3) and MODBUS gateway (tcp), special mention in the field of security allowing the use of SSL through digital certificates belonging to the client.

They also allow the connection and management of temperature / humidity probes, SMS sending via a GSM modem, and management of voltage-free contacts.



"Basic" Ethernet Adapter / SNMP WEB Adapter

This low cost card allows basic local monitoring in the form of a table, automatic and non-customisable sending of e-mails and static event management. It is recommended for management using third-party software through SNMP (Nagios, Zabbix, Pandora, Prtg, OpenView, Tivoli, etc).



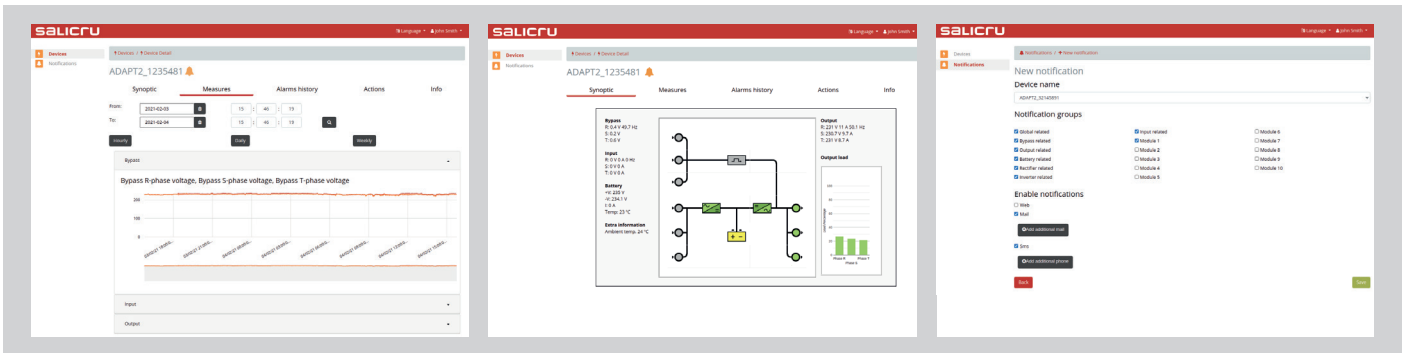
Nimbus Cloud, remote monitoring system, with 24/7 availability

Modern companies run their systems 365 days a year, and therefore require total electrical protection. Salicru equipment featuring the **NIMBUS** remote monitoring service offers a perfect complement to the service of the most demanding customers.

system that collects, organises and distributes the sensors and alarms sent by the **Salicru** equipment; and **Salicru's** team of Technical Support Service engineers who offer a 24/7 service providing answers to any questions that the customer may have.

The **NIMBUS** remote monitoring system is comprised of 3 systems: the Nimbus Card (Embedded Linux Systems) housed inside the **Salicru** equipment and connected to the Internet either via the customer's corporate network or optionally via 3G/4G router; the Nimbus Cloud, a

The Nimbus Card is based on the latest IoT technologies, featuring channel connection via MQTT and historical data collection via InfluxDB.



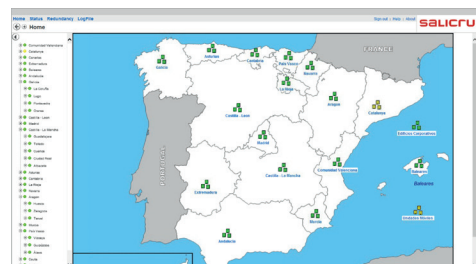
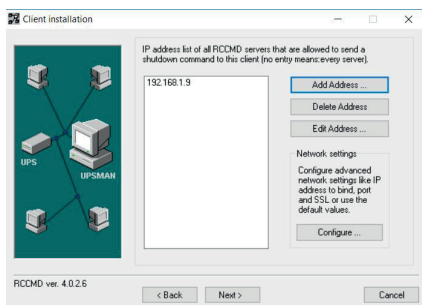
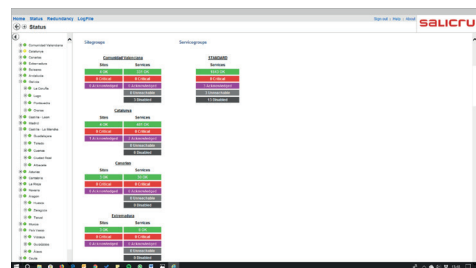
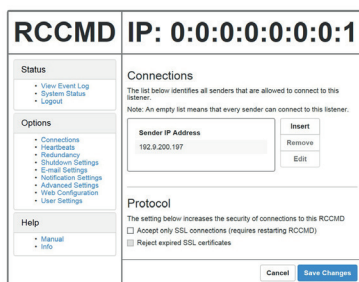
RCCMD: Remote shutdown application

Software agent for most physical/virtual operating systems. The different actions (shutdown, message, action) are executed by customisable scripts, after receiving the order from the Ethernet Adapter / SNMP WEB Adapter. Compatible with most operating systems, including virtual systems (vmware, citrix and hyperv).

UNMS II: Unlimited Salicru's UPS management

Software for centralised monitoring of a large fleet of UPS installed in our company. The **UNMS II** is installed as a WEB service to facilitate monitoring and management. The **UNMS II** is a scalable software that has different licensing levels according to the equipment to be monitored, from the basic and free level, of 9 UPS devices, to installations of more than 2,500.

Software licensed by a physical server to be managed. Each adapter includes a license. For more servers, additional licenses must be purchased. It offers the SSL security option.



| DESCRIPTION | NIMBUS ADAPTER/ SNMP WEB ADAPTER | ETHERNET ADAPTER / SNMP WEB ADAPTER | BASIC ETHERNET ADAPTER / SNMP WEB ADAPTER |
|--|--|---|--|
| Compatible with all series featuring Salicru slots | According to the lower compatibility list | Yes | No |
| Easy configuration assistant | Self configurable | Yes | No |
| Data visualisation | Graph, block diagram | Graph, block diagram | Table |
| Connection to the Salicru Cloud (IoT – MQTT) | Yes, for SLC CUBE4 and SLC ADAPT2 series | No | No |
| Ordered shutdown of servers | Yes, due to power failure and low battery alarm via RCCMD (optional) Software, for most physical / virtual Operating Systems | Yes, event activation by RCCMD software for most physical / virtual operating systems | Basic for Windows / Linux |
| SMTP configuration | No | Configurable, enables encryption, port customisation | Standard |
| Email notifications | Automatic, non-customizable text / message | Automatic and/or allows for customisation of alerts to be sent, and at what time | Automatic, non-customisable |
| SMS notifications | Yes (SMS sending via the cloud) | Yes (via optional modem) | No |
| Push notifications | Yes (Webserver) | No | No |
| Customisable events according to UPS values / measurements | No | Yes | No |
| SNMP compatibility | SNMP V2 | SNMP V2 and V3 | SNMP V2 |
| MIB file compatibility | RFC1628, and private MIBs | RFC1628, and private extensions | RFC1628, and private extensions |
| History of events and measurements | Events and measures in graphical table, exportable to excel for DC power-S | Customisable, viewing of text and graphs, allows export to Excel | Events and measures in a table |
| API REST protocol | Yes | Yes | No |
| MODBUS protocol | TCP and RS232 | TCP and RS232 | No |
| BACnet protocol | No | Yes | No |
| IEC61850 protocol | Yes (DCS only) | No | No |
| LonWork, ProfiBus protocol | No | Optional | No |
| Remote SysLog | No | Yes | No |
| Secure access | 2 levels of access, Engineer, Guest, SSH secure access | Via Configurable Login and Password | No |
| Manageable relays option | No | Yes | No |
| Optional Temperature / Humidity Probe | No | Yes | No |
| Firmware Upgrade | Yes | Yes | Yes |
| Remote Firmware Upgrade | Yes | No | No |

Information subject to change without notice.

| COMPATIBILITY BY SERIES | NIMBUS ADAPTER/ SNMP WEB ADAPTER | ETHERNET ADAPTER / SNMP WEB ADAPTER | BASIC ETHERNET ADAPTER / SNMP WEB ADAPTER |
|-------------------------|-------------------------------------|--|--|
| SPS AVD R / SPS ADV T | – | ● | – |
| SPS ADV RT2 | – | ● | ● |
| SLC TWIN PRO2 0-3 kVA | – | ● | ● |
| SLC TWIN PRO2 4-20 kVA | ● | ● | ● |
| SLC TWIN RT2 | ● | ● | ● |
| SLC CUBE3+ | ● | ● | – |
| SLC CUBE 4 | ● | ● | – |
| SLC X-PERT | ● ⁽¹⁾ | ● | – |
| SLC X-TRA | ● ⁽¹⁾ | ● | – |
| SLC ADAPT / 2 | ● | ● | – |
| DC POWER S / DC POWER L | ● | – | – |
| EMI 3 | ● | – | – |

● Compatible – No compatible

(1) Optional RS485 required

Архангельск (8182)63-90-72
Астана (7172)727-132
Астрахань (8512)99-46-04
Барнаул (3852)73-04-60
Белгород (4722)40-23-64
Брянск (4832)59-03-52
Владивосток (423)249-28-31
Волгоград (844)278-03-48
Вологда (8172)26-41-59
Воронеж (473)204-51-73
Екатеринбург (343)384-55-89
Иваново (4932)77-34-06

Ижевск (3412)26-03-58
Иркутск (395)279-98-46
Казань (843)206-01-48
Калининград (4012)72-03-81
Калуга (4842)92-23-67
Кемерово (3842)65-04-62
Киров (8332)68-02-04
Краснодар (861)203-40-90
Красноярск (391)204-63-61
Курск (4712)77-13-04
Липецк (4742)52-20-81

Киргизия (996)312-96-26-47

Магнитогорск (3519)55-03-13
Москва (495)268-04-70
Мурманск (8152)59-64-93
Набережные Челны (8552)20-53-41
Нижний Новгород (831)429-08-12
Новокузнецк (3843)20-46-81
Новосибирск (383)227-86-73
Омск (3812)21-46-40
Орел (4862)44-53-42
Оренбург (3532)37-68-04
Пенза (8412)22-31-16

Россия (495)268-04-70

Пермь (342)205-81-47
Ростов-на-Дону (863)308-18-15
Рязань (4912)46-61-64
Самара (846)206-03-16
Санкт-Петербург (812)309-46-40
Саратов (845)249-38-78
Севастополь (8692)22-31-93
Симферополь (3652)67-13-56
Смоленск (4812)29-41-54
Сочи (862)225-72-31
Ставрополь (8652)20-65-13

Казахстан (772)734-952-31

Сургут (3462)77-98-35
Тверь (4822)63-31-35
Томск (3822)98-41-53
Тула (4872)74-02-29
Тюмень (3452)66-21-18
Ульяновск (8422)24-23-59
Уфа (347)229-48-12
Хабаровск (4212)92-98-04
Челябинск (351)202-03-61
Череповец (8202)49-02-64
Ярославль (4852)69-52-93

<http://salicru.nt-rt.ru> || sfc@nt-rt.ru