

Распределители питания SPS PDU

Архангельск (8182)63-90-72
Астана (7172)727-132
Астрахань (8512)99-46-04
Барнаул (3852)73-04-60
Белгород (4722)40-23-64
Брянск (4832)59-03-52
Владивосток (423)249-28-31
Волгоград (844)278-03-48
Вологда (8172)26-41-59
Воронеж (473)204-51-73
Екатеринбург (343)384-55-89
Иваново (4932)77-34-06

Ижевск (3412)26-03-58
Иркутск (395)279-98-46
Казань (843)206-01-48
Калининград (4012)72-03-81
Калуга (4842)92-23-67
Кемерово (3842)65-04-62
Киров (8332)68-02-04
Краснодар (861)203-40-90
Красноярск (391)204-63-61
Курск (4712)77-13-04
Липецк (4742)52-20-81

Киргизия (996)312-96-26-47

Магнитогорск (3519)55-03-13
Москва (495)268-04-70
Мурманск (8152)59-64-93
Набережные Челны (8552)20-53-41
Нижний Новгород (831)429-08-12
Новокузнецк (3843)20-46-81
Новосибирск (383)227-86-73
Омск (3812)21-46-40
Орел (4862)44-53-42
Оренбург (3532)37-68-04
Пенза (8412)22-31-16

Россия (495)268-04-70

Пермь (342)205-81-47
Ростов-на-Дону (863)308-18-15
Рязань (4912)46-61-64
Самара (846)206-03-16
Санкт-Петербург (812)309-46-40
Саратов (845)249-38-78
Севастополь (8692)22-31-93
Симферополь (3652)67-13-56
Смоленск (4812)29-41-54
Сочи (862)225-72-31
Ставрополь (8652)20-65-13

Казахстан (772)734-952-31

Сургут (3462)77-98-35
Тверь (4822)63-31-35
Томск (3822)98-41-53
Тула (4872)74-02-29
Тюмень (3452)66-21-18
Ульяновск (8422)24-23-59
Уфа (347)229-48-12
Хабаровск (4212)92-98-04
Челябинск (351)202-03-61
Череповец (8202)49-02-64
Ярославль (4852)69-52-93

<http://salicru.nt-rt.ru> || sfc@nt-rt.ru

SPS PDU

Power distribution unit



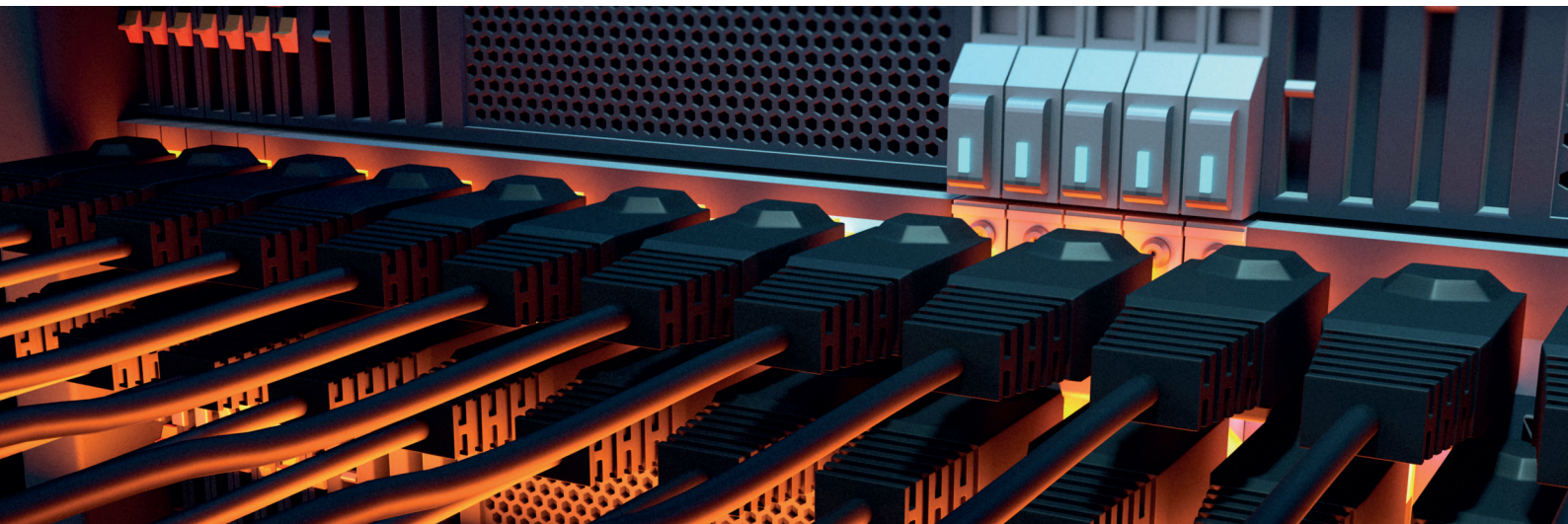
SPS PDU: Power supply to IT equipment on 19" rack

Salicru's power distribution units (SPS PDU) are designed to distribute power coming from an uninterruptible power supply (UPS), generator or the mains to multiple devices, such as network and server racks in data centres and computer rooms.

SPS PDU models incorporate an on/off switch with illumination and protective cover to prevent unwanted actions. The multi-position system allows the installation of fixing brackets in multiple combinations, both in depth (6 positions) and in inclination (5 positions). The entire range is in 1U 19" format and offers horizontal or vertical rack installation options.

Performances

- 1U - 19" aluminium profiles.
- Ease of installation and connection.
- Multiple depth positions (6 positions).
- Multiple inclination positions (90° / 45° / 0° / -45° / -90°).
- Illuminated on/off switch.
- Power supply at 250 V AC - 50/60 Hz.
- Schuko, UK, IEC and combined sockets available.
- On/off switch protective cover.
- Other configurations available on request.
- Vertical or horizontal installation.
- Connection quality and maximum socket safety.



SALICRU

Depth adaptation

Choice of up to 6 different installation depths to suit needs.



Inclination adaptation

Selection of different degrees of inclination to optimise the connection of the devices to be powered.



Switch protection

A removable cover protects the on/off switch from possible unwanted actions.



Range

MODEL	CODE	SOCKET INPUT TYPE	SOCKET OUTPUT TYPE	NO. OF OUTPUT SOCKETS
SPS 12F PDU C13/C14	680CA000002	C14	C13	12
SPS 8F PDU SCH/SCH	680CA000003	SCH	SCH	8
SPS 6F PDU UK/UK	680CA000004	UK	UK	6
SPS 3F+6F PDU UK+C13/C14	680CA000005	C14	UK + C13	3 + 6
SPS 4F+6F PDU SCH+C13/C14	680CA000006	C14	SCH + C13	4 + 6

Technical specifications

MODEL		SPS 12F PDU C13/C14	SPS 8F PDU SCH/SCH	SPS 6F PDU UK/UK	SPS 3F+6F PDU UK+C13/C14	SPS 4F+6F PDU SCH+C13/C14
Rated current (A)		10	16	13	10	
Rated voltage / frequency		100 / 250 V AC - 50 Hz / 60 Hz				
Socket input type		C14	SCH	UK	C14	
Socket type and quantity		C13 (12)	SCH (8)	UK (6)	UK (3) + C13 (6)	SCH (4) + C13 (6)
On/off switch		Yes				
Length of power cable		1.5				
Child protection in the sockets		Yes				
INDICATIONS LED type		Yes				
GENERAL	Operating temperature	0° C ÷ 50° C				
	Storage temperature	-15° C ÷ 60° C				
	Relative humidity	Up to 95%, non-condensing				
	Maximum operating altitude	2,400 masl (power degradation up to 5,000 m)				
	Degree of protection	IP20				
	Installation	Fixing brackets in 3 positions 0° o ±45°				
STANDARDS	RoHS	Yes				
	Plugs, power strips and sockets	IEC 60884-1; UNE 20315-1-1; EN 60320-1; EN 60320-3	IEC 60884-1; BS 1363-1; BS 1363-2	IEC 60884-1; UNE 20315-1-1; EN 60320-1; EN 60320-3		
	Safety	IEC 60950 ; DIN EN 50525-2-11 ; IEC 61058-1:2002/A2:2008				
DIMENSIONS	Quality and environmental management	ISO 9001 and ISO 14001				
	Depth × Width × Height (mm)	51 × 443 × 44				
WEIGHT	Weight (kg)	0.8				

Архангельск (8182)63-90-72
Астана (7172)727-132
Астрахань (8512)99-46-04
Барнаул (3852)73-04-60
Белгород (4722)40-23-64
Брянск (4832)59-03-52
Владивосток (423)249-28-31
Волгоград (844)278-03-48
Вологда (8172)26-41-59
Воронеж (473)204-51-73
Екатеринбург (343)384-55-89
Иваново (4932)77-34-06

Ижевск (3412)26-03-58
Иркутск (395)279-98-46
Казань (843)206-01-48
Калининград (4012)72-03-81
Калуга (4842)92-23-67
Кемерово (3842)65-04-62
Киров (8332)68-02-04
Краснодар (861)203-40-90
Красноярск (391)204-63-61
Курск (4712)77-13-04
Липецк (4742)52-20-81

Киргизия (996)312-96-26-47

Магнитогорск (3519)55-03-13
Москва (495)268-04-70
Мурманск (8152)59-64-93
Набережные Челны (8552)20-53-41
Нижний Новгород (831)429-08-12
Новокузнецк (3843)20-46-81
Новосибирск (383)227-86-73
Омск (3812)21-46-40
Орел (4862)44-53-42
Оренбург (3532)37-68-04
Пенза (8412)22-31-16

Россия (495)268-04-70

Пермь (342)205-81-47
Ростов-на-Дону (863)308-18-15
Рязань (4912)46-61-64
Самара (846)206-03-16
Санкт-Петербург (812)309-46-40
Саратов (845)249-38-78
Севастополь (8692)22-31-93
Симферополь (3652)67-13-56
Смоленск (4812)29-41-54
Сочи (862)225-72-31
Ставрополь (8652)20-65-13

Казахстан (772)734-952-31

Сургут (3462)77-98-35
Тверь (4822)63-31-35
Томск (3822)98-41-53
Тула (4872)74-02-29
Тюмень (3452)66-21-18
Ульяновск (8422)24-23-59
Уфа (347)229-48-12
Хабаровск (4212)92-98-04
Челябинск (351)202-03-61
Череповец (8202)49-02-64
Ярославль (4852)69-52-93

<http://salicru.nt-rt.ru> || sfc@nt-rt.ru