

Архангельск (8182)63-90-72
Астана (7172)727-132
Астрахань (8512)99-46-04
Барнаул (3852)73-04-60
Белгород (4722)40-23-64
Брянск (4832)59-03-52
Владивосток (423)249-28-31
Волгоград (844)278-03-48
Вологда (8172)26-41-59
Воронеж (473)204-51-73
Екатеринбург (343)384-55-89
Иваново (4932)77-34-06

Ижевск (3412)26-03-58
Иркутск (395)279-98-46
Казань (843)206-01-48
Калининград (4012)72-03-81
Калуга (4842)92-23-67
Кемерово (3842)65-04-62
Киров (8332)68-02-04
Краснодар (861)203-40-90
Красноярск (391)204-63-61
Курск (4712)77-13-04
Липецк (4742)52-20-81
Киргизия (996)312-96-26-47

Магнитогорск (3519)55-03-13
Москва (495)268-04-70
Мурманск (8152)59-64-93
Набережные Челны (8552)20-53-41
Нижний Новгород (831)429-08-12
Новокузнецк (3843)20-46-81
Новосибирск (383)227-86-73
Омск (3812)21-46-40
Орел (4862)44-53-42
Оренбург (3532)37-68-04
Пенза (8412)22-31-16
Россия (495)268-04-70

Пермь (342)205-81-47
Ростов-на-Дону (863)308-18-15
Рязань (4912)46-61-64
Самара (846)206-03-16
Санкт-Петербург (812)309-46-40
Саратов (845)249-38-78
Севастополь (8692)22-31-93
Симферополь (3652)67-13-56
Смоленск (4812)29-41-54
Сочи (862)225-72-31
Ставрополь (8652)20-65-13
Казахстан (772)734-952-31

Сургут (3462)77-98-35
Тверь (4822)63-31-35
Томск (3822)98-41-53
Тула (4872)74-02-29
Тюмень (3452)66-21-18
Ульяновск (8422)24-23-59
Уфа (347)229-48-12
Хабаровск (4212)92-98-04
Челябинск (351)202-03-61
Череповец (8202)49-02-64
Ярославль (4852)69-52-93

<http://salicru.nt-rt.ru> || sfc@nt-rt.ru

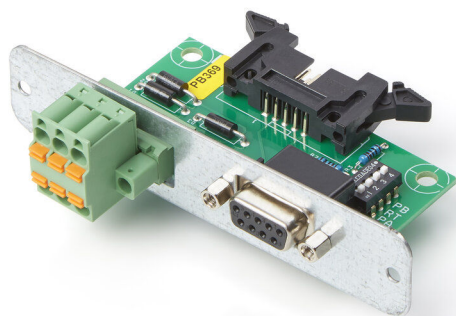
Ethernet/SNMP Web Adapter

SNMP adapter to integrate the equipment in a IT network by using an IP address. It includes adapter, CD with programming software, configuration cable, MIB (Management Information Base) and user manual. Available in card or box formats.



MODBUS Protocol

Public and industrial communication protocol that allows controlling and monitoring of the device. Communication over an RS-232 port.



RCCMD Software

UPS managing and monitoring in a heterogeneous IT networks, where different platforms coexist, becomes almost impossible, because the less common operating systems on the market do not have that such software. The RCCMD is an application that allows the simultaneous and secure shutdown of the 95% of existing platforms. Like the most comprehensive monitoring software, the RCCMD can send messages or commands to different clients of the network.



UNMS II Software

For those networks which have more than one UPS to feed it and it requires a concentration monitoring from a single command post, UNMS II software (UPS Network Management System) is the ideal solution. UNMS II allows managing multiple installations of all those units that have an Ethernet adapter SNMP / Web Adapter and / or sensors. UNMS II packages are available in 9, 25, 50 or 150 licenses.



External manual bypass

External Manual Bypass to make maintenance tasks, by isolating the equipment electrically. Bypass type make Before break



Temperature and humidity sensor

Probe to measure the magnitude of the battery ambient temperature and humidity of the equipment



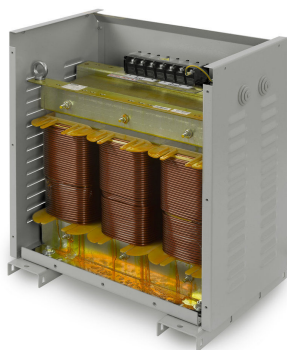
Isolation transformer

Electrical device that provides galvanic isolation between input and output, and adjust tension.



Autotransformer for other voltages

It used to adapt the equipment to other different nominal voltages 3x380 / 400/415 + N V.



Potential-free contacts

These are potential-free relays that are used to receive an on/off signal for the automatic operation of a device.



ATS - Automatic transfer system (up to 6 kVA)

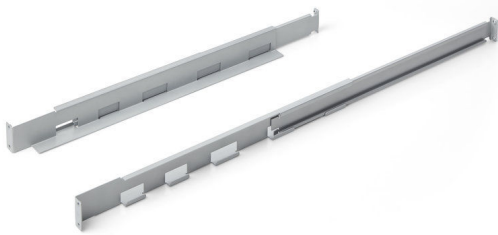
Automatic switch between two single-phase AC power lines which, starting from two sine-wave current power lines, supplies output voltage to the load(s). The switching can be automatic or manual.



Salicru researches and develops power electronics equipment to ensure a continuous, clean and reliable power supply.

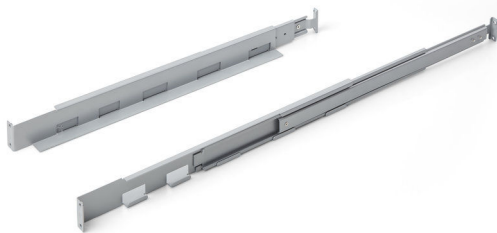
Telescopic rack guides

Telescopic guides for installation of SPS Advance RT2 and SLC Twin RT2 UPSs (UPSs or battery modules) in cabinets with depths of between 480 mm and 780 mm.



Telescopic rack guides (550-1.100 mm)

Telescopic guides for installation of SPS Advance RT2 and SLC Twin RT2 UPSs (UPSs or battery modules) in cabinets with depths of between 550 mm and 1.100 mm.



RS485 Port

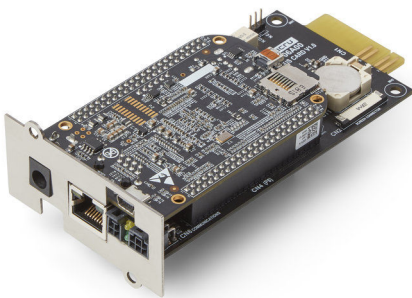
It allows extending the communication functions of an equipment through a RS-485 or Ethernet connection. Format card.



NIMBUS adapter for remote management

The NIMBUS adapter has two versions:

- SNMP adapter version, which enables the device to be integrated into a computer network using an IP address. Management information bases (MIB) are provided for correct integration into the system.
- Remote maintenance service through an Internet connection, making it possible to know the state of a complete system of devices at all times and to overcome possible device faults, and providing a constant global view of the installation and all kinds of graphics and statistics.



BACS II

Monitoring, managing and alarm system for lead-acid batteries. Ensures the full operation of the battery system, preventing unexpected or unnoticed failures caused by defective batteries. System Components: WebManager, battery modules, associated bus



Frequency converter function

To convert the input frequency from 50Hz to 60Hz or vice versa. Batteries can be installed in case they are required.

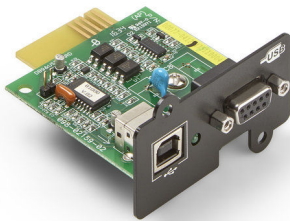
Tropicalised electronic cards

Treated against external agents such as condensation, humidity and marine environments.

Additional battery cabinets for facilities that require long backup times.

RS232 port

RS-232 card which doubles the existing communication port in the equipment as well as the dry contacts too (relays).



Cable for parallel installations

Communications cable for simple or redundant parallel installations.



Input/output voltage configurations

Consult us for possible single/single-phase, three/single-phase and single/three-phase input/output configurations.

Protection rating IP21

Enclosure with IP21 protection rating in accordance with standard IEC 60529 Degrees of Protection.

Separate bypass line

For facilities with dual power supply, enabling the separation of inverter and bypass line power supplies.

Backfeed protection

Backfeed protection provides additional protection to the input in the event that the bypass thyristors suffer a short circuit. Use of the internal backfeed contactor in the bypass line provides security in fault situations occurring in the static bypass line and prevents power from rising in the input.



Earthquake-proof feet

Protection against the force of horizontal displacement caused by an earthquake.

Compatible with a wide range of batteries

Pb-Ca, Ni-Cd, lead acid, VRLA with gel electrolyte or lithium-ion.

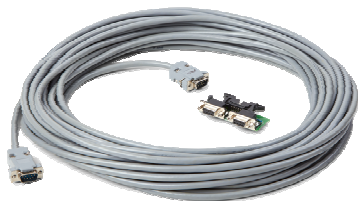


Common rectifier/bypass input

For installations where only one electricity connection is available to power the UPS, it is possible to connect both inputs (rectifier and bypass) using a cable jumper.

Parallel/redundant kit

A kit for installations needing to grow in power or redundancy in the system, enabling the different units to be interconnected.



Архангельск (8182)63-90-72
Астана (7172)727-132
Астрахань (8512)99-46-04
Барнаул (3852)73-04-60
Белгород (4722)40-23-64
Брянск (4832)59-03-52
Владивосток (423)249-28-31
Волгоград (844)278-03-48
Вологда (8172)26-41-59
Воронеж (473)204-51-73
Екатеринбург (343)384-55-89
Иваново (4932)77-34-06

Ижевск (3412)26-03-58
Иркутск (395)279-98-46
Казань (843)206-01-48
Калининград (4012)72-03-81
Калуга (4842)92-23-67
Кемерово (3842)65-04-62
Киров (8332)68-02-04
Краснодар (861)203-40-90
Красноярск (391)204-63-61
Курск (4712)77-13-04
Липецк (4742)52-20-81
Киргизия (996)312-96-26-47

Магнитогорск (3519)55-03-13
Москва (495)268-04-70
Мурманск (8152)59-64-93
Набережные Челны (8552)20-53-41
Нижний Новгород (831)429-08-12
Новокузнецк (3843)20-46-81
Новосибирск (383)227-86-73
Омск (3812)21-46-40
Орел (4862)44-53-42
Оренбург (3532)37-68-04
Пенза (8412)22-31-16
Россия (495)268-04-70

Пермь (342)205-81-47
Ростов-на-Дону (863)308-18-15
Рязань (4912)46-61-64
Самара (846)206-03-16
Санкт-Петербург (812)309-46-40
Саратов (845)249-38-78
Севастополь (8692)22-31-93
Симферополь (3652)67-13-56
Смоленск (4812)29-41-54
Сочи (862)225-72-31
Ставрополь (8652)20-65-13
Казахстан (772)734-952-31

Сургут (3462)77-98-35
Тверь (4822)63-31-35
Томск (3822)98-41-53
Тула (4872)74-02-29
Тюмень (3452)66-21-18
Ульяновск (8422)24-23-59
Уфа (347)229-48-12
Хабаровск (4212)92-98-04
Челябинск (351)202-03-61
Череповец (8202)49-02-64
Ярославль (4852)69-52-93

<http://salicru.nt-rt.ru> || sfc@nt-rt.ru