

Бытовые ИБП SPS ONE

Архангельск (8182)63-90-72
Астана (7172)727-132
Астрахань (8512)99-46-04
Барнаул (3852)73-04-60
Белгород (4722)40-23-64
Брянск (4832)59-03-52
Владивосток (423)249-28-31
Волгоград (844)278-03-48
Вологда (8172)26-41-59
Воронеж (473)204-51-73
Екатеринбург (343)384-55-89
Иваново (4932)77-34-06

Ижевск (3412)26-03-58
Иркутск (395)279-98-46
Казань (843)206-01-48
Калининград (4012)72-03-81
Калуга (4842)92-23-67
Кемерово (3842)65-04-62
Киров (8332)68-02-04
Краснодар (861)203-40-90
Красноярск (391)204-63-61
Курск (4712)77-13-04
Липецк (4742)52-20-81

Киргизия (996)312-96-26-47

Магнитогорск (3519)55-03-13
Москва (495)268-04-70
Мурманск (8152)59-64-93
Набережные Челны (8552)20-53-41
Нижний Новгород (831)429-08-12
Новокузнецк (3843)20-46-81
Новосибирск (383)227-86-73
Омск (3812)21-46-40
Орел (4862)44-53-42
Оренбург (3532)37-68-04
Пенза (8412)22-31-16

Россия (495)268-04-70

Пермь (342)205-81-47
Ростов-на-Дону (863)308-18-15
Рязань (4912)46-61-64
Самара (846)206-03-16
Санкт-Петербург (812)309-46-40
Саратов (845)249-38-78
Севастополь (8692)22-31-93
Симферополь (3652)67-13-56
Смоленск (4812)29-41-54
Сочи (862)225-72-31
Ставрополь (8652)20-65-13

Казахстан (772)734-952-31

Сургут (3462)77-98-35
Тверь (4822)63-31-35
Томск (3822)98-41-53
Тула (4872)74-02-29
Тюмень (3452)66-21-18
Ульяновск (8422)24-23-59
Уфа (347)229-48-12
Хабаровск (4212)92-98-04
Челябинск (351)202-03-61
Череповец (8202)49-02-64
Ярославль (4852)69-52-93

<http://salicru.nt-rt.ru> || sfc@nt-rt.ru

SPS ONE

Line-interactive UPS 500 to 2000 VA

SPS ONE: The best electrical protection for home and professional office

An uninterruptible power supply (UPS) in a mini tower format with Line-interactive topology, Salicru's **SPS ONE** series provides battery backup (with pseudo sine wave inverter output) and overload protection. During power failures, **SPS ONE** devices provide battery backup to enable computer systems to shut down properly and protect against data loss and electronics damage. Operation through automatic voltage regulation (AVR) to correct small voltage fluctuations without having to use the battery, thus extending its life. The AVR function is essential in areas where voltage fluctuations occur frequently.

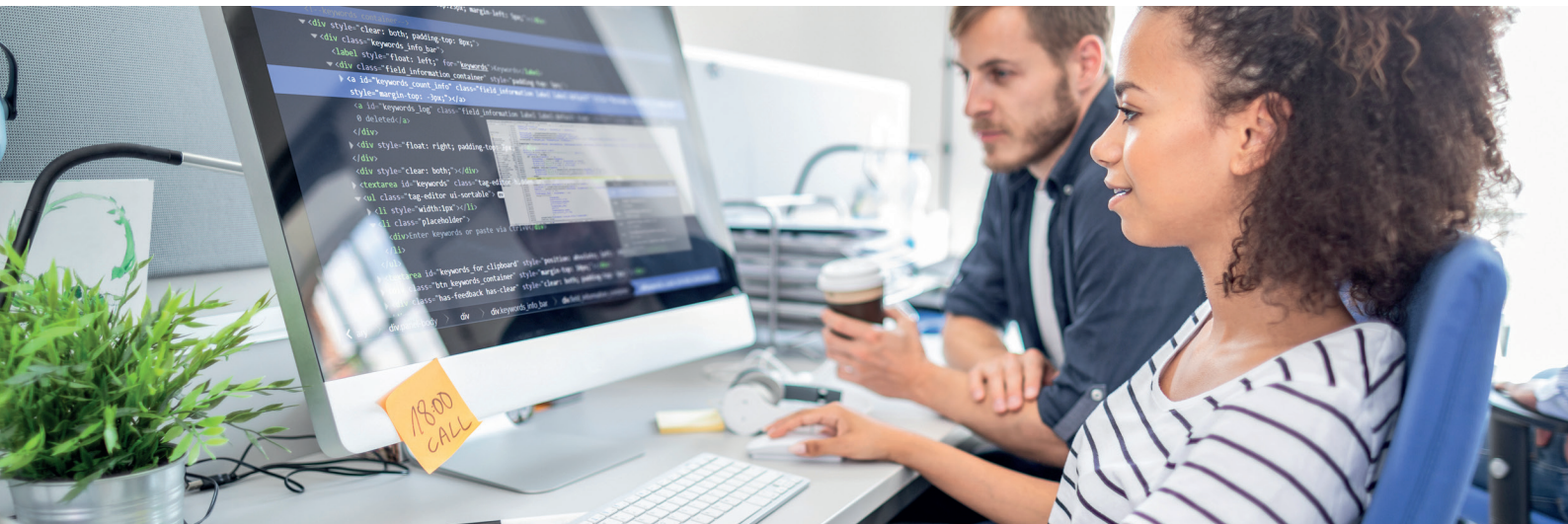
It features a UPS/PC communication interface via USB with HID protocol, which allows parameter setting, UPS control and shutdown or hibernation of the computer through the USB port. Compatible with Windows, Linux and Mac operating systems. UPS management and monitoring software is also available for closing files/applications for Windows, Linux and Mac families. Free and downloadable from www.salicru.com.

The **SPS ONE** series is available in 500, 700, 900, 1100, 1500 and 2000 VA power ratings.



Applications: Essential security to ensure the continuity of typical office computing tasks.

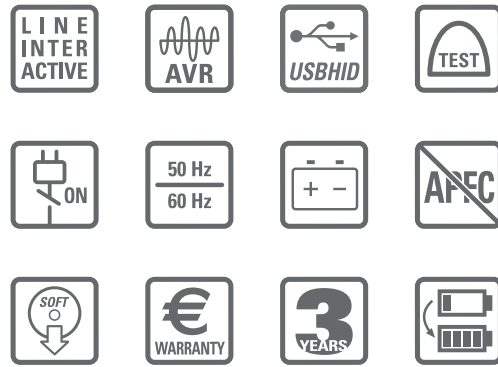
The numerous computer and multimedia devices we have in our homes, offices and small businesses hold large amounts of personal and professional files and data. All of these systems, however, are highly dependent on one thing: a good quality, stable power supply to ensure that they can be used and enjoyed without interruption. The best solution to prevent interruptions, damage or data loss is the protection provided by a UPS from Salicru's **SPS ONE** series.



SALICRU

Performances

- Line-interactive technology.
- Backup battery for power supply interruptions.
- Overvoltage protection for sensitive devices.
- Automatic voltage stabilisation (AVR)
- Pseudo sine wave output voltage.
- USB interface with HID protocol for all models.
- Management and monitoring software for Windows, Linux and Mac.
- A single on/off button for ease of use.
- LED status indications.
- Automatic restart when power supply restored.
- Compact mini tower format.
- Protection against overloads, short circuits and transients.
- 3-year warranty.
- Economic guarantee for connected devices (EU countries only).
- SLC Greenergy solution.



USB interface with HID protocol

- Parameter configuration, UPS control and computer shutdown/hibernation through the USB port.
- Available for Windows, Linux and Mac environments.



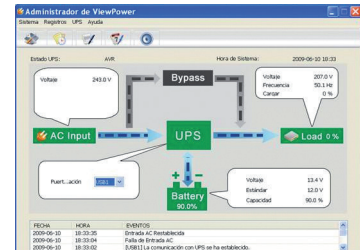
Salicru warranty

- Online registration at support.salicru.com.
- 3-year warranty.
- Replacement of the product at the user's office/home. ⁽¹⁾
- Batteries covered by the warranty.

(1) Consult countries with this service.

Software

- UPS monitoring and orderly closing of files/ applications for Windows, Linux and Mac families.
- Free and downloadable from www.salicru.com.



Available sockets



Range

| MODEL SCHUKO | CODE | POWER (VA / W) | NO. OF SOCKETS | DIMENSIONS (D × W × H mm) | WEIGHT (Kg) |
|--------------|-------------|----------------|----------------|---------------------------|-------------|
| SPS 500 ONE | 662AF000001 | 500 / 240 | 2 | 300 × 101 × 142 | 3.5 |
| SPS 700 ONE | 662AF000002 | 700 / 360 | 2 | 300 × 101 × 142 | 4.45 |
| SPS 900 ONE | 662AF000003 | 900 / 480 | 2 | 300 × 101 × 142 | 4.9 |
| SPS 1100 ONE | 662AF000004 | 1100 / 600 | 4 | 320 × 130 × 182 | 8.2 |
| SPS 1500 ONE | 662AF000005 | 1500 / 900 | 4 | 320 × 130 × 182 | 10.4 |
| SPS 2000 ONE | 662AF000006 | 2000 / 1200 | 4 | 320 × 130 × 182 | 11 |

| MODEL IEC | CODE | POWER (VA / W) | NO. OF SOCKETS | DIMENSIONS (D × W × H mm) | WEIGHT (Kg) |
|------------------|-------------|----------------|----------------|---------------------------|-------------|
| SPS 500 ONE IEC | 662AF000013 | 500 / 240 | 4 | 300 × 101 × 142 | 3.5 |
| SPS 700 ONE IEC | 662AF000014 | 700 / 360 | 4 | 300 × 101 × 142 | 4.45 |
| SPS 900 ONE IEC | 662AF000015 | 900 / 480 | 4 | 300 × 101 × 142 | 4.9 |
| SPS 1100 ONE IEC | 662AF000016 | 1100 / 600 | 6 | 320 × 130 × 182 | 8.2 |
| SPS 1500 ONE IEC | 662AF000017 | 1500 / 900 | 6 | 320 × 130 × 182 | 10.4 |
| SPS 2000 ONE IEC | 662AF000018 | 2000 / 1200 | 6 | 320 × 130 × 182 | 11 |

| MODEL UK | CODE | POWER (VA / W) | NO. OF SOCKETS | DIMENSIONS (D × W × H mm) | WEIGHT (Kg) |
|-----------------|-------------|----------------|----------------|---------------------------|-------------|
| SPS 500 ONE UK | 662AF000007 | 500 / 240 | 2 | 300 × 101 × 142 | 3.5 |
| SPS 700 ONE UK | 662AF000008 | 700 / 360 | 2 | 300 × 101 × 142 | 4.45 |
| SPS 900 ONE UK | 662AF000009 | 900 / 480 | 2 | 300 × 101 × 142 | 4.9 |
| SPS 1100 ONE UK | 662AF000010 | 1100 / 600 | 4 | 320 × 130 × 182 | 8.2 |
| SPS 1500 ONE UK | 662AF000011 | 1500 / 900 | 2 | 320 × 130 × 182 | 10.4 |
| SPS 2000 ONE UK | 662AF000012 | 2000 / 1200 | 2 | 320 × 130 × 182 | 11 |

Dimensions



SPS 500-900 ONE (UK/IEC)



SPS 1100 ONE (UK/IEC)

Technical specifications

| MODEL | | SPS ONE |
|-----------------|--------------------------------------|-----------------------------------------------------------------------------------------------------------------------------------------------|
| TECHNOLOGY | | Line-interactive |
| FORMAT | | Tower |
| INPUT | Rated voltage | 220 V / 230 V / 240 V AC |
| | Voltage range | Until 162 V ÷ 290 V |
| | Stabiliser | AVR Buck / Boost |
| | Rated frequency | 50 / 60 Hz |
| | Auto-detection of frequency | Yes |
| | Protection | Thermal re-arm or fuse (depending on model) |
| OUTPUT | Rated voltage | 220 V / 230 V / 240 V AC |
| | Voltage accuracy (battery mode) | ±10% |
| | Waveform (battery mode) | Simulated sinewave |
| | Frequency | 50 / 60 Hz ± 1 Hz ⁽¹⁾ |
| | Transfer time | 2 / 6 ms |
| | Socket type | Schuko (DIN), english (UK) or IEC |
| BATTERY | Battery type | Enclosed batteries Pb-Ca without maintenance, sealed, design life 3-5 years |
| | Recharge time | 4-6 hours until 90% capacity |
| | User replaceable battery | Yes |
| | Back up time | Up to 20 minutes |
| | Battery replacement alarm | Yes |
| COMMUNICATION | Ports | USB HID |
| | Monitoring software | Compatible with Windows, Linux, Unix and Mac |
| | Downloadable from | support.salicru.com |
| INDICATIONS | Type | LED |
| | Operating modes | Normal / Stabilisation (AVR) / Battery |
| | Mains present | Green LED |
| | Alarm | Output battery mode, low battery (back up time), charger failure and overload |
| | Audible | Every 10 s for battery operation. Every 1 s for low battery. Every 0.5 s for overcharge. Continuous for fault 2 s for battery replacement. |
| | Failure | Red LED |
| OTHER FUNCTIONS | Cold start (start-up from batteries) | Yes |
| | Automatic restart | Yes, after the end of back up time |
| GENERAL | Operating temperature | 0° C ÷ + 40° C |
| | Relative humidity | Uptil 90%, without condensation |
| | Maxium operating altitude | 2,400 masl |
| | Acoustic noise at 1 metre | < 40 dB |
| STANDARDS | Safety | EN-IEC 62040-1 |
| | Electromagnetic compatibility (EMC) | EN-IEC 62040-12 |
| | Operation | EN 62040-3 |
| | Quality and environmental management | ISO 9001 & ISO 14001 |

(1) Battery mode

Архангельск (8182)63-90-72
Астана (7172)727-132
Астрахань (8512)99-46-04
Барнаул (3852)73-04-60
Белгород (4722)40-23-64
Брянск (4832)59-03-52
Владивосток (423)249-28-31
Волгоград (844)278-03-48
Вологда (8172)26-41-59
Воронеж (473)204-51-73
Екатеринбург (343)384-55-89
Иваново (4932)77-34-06

Ижевск (3412)26-03-58
Иркутск (395)279-98-46
Казань (843)206-01-48
Калининград (4012)72-03-81
Калуга (4842)92-23-67
Кемерово (3842)65-04-62
Киров (8332)68-02-04
Краснодар (861)203-40-90
Красноярск (391)204-63-61
Курск (4712)77-13-04
Липецк (4742)52-20-81

Киргизия (996)312-96-26-47

Магнитогорск (3519)55-03-13
Москва (495)268-04-70
Мурманск (8152)59-64-93
Набережные Челны (8552)20-53-41
Нижний Новгород (831)429-08-12
Новокузнецк (3843)20-46-81
Новосибирск (383)227-86-73
Омск (3812)21-46-40
Орел (4862)44-53-42
Оренбург (3532)37-68-04
Пенза (8412)22-31-16

Россия (495)268-04-70

Пермь (342)205-81-47
Ростов-на-Дону (863)308-18-15
Рязань (4912)46-61-64
Самара (846)206-03-16
Санкт-Петербург (812)309-46-40
Саратов (845)249-38-78
Севастополь (8692)22-31-93
Симферополь (3652)67-13-56
Смоленск (4812)29-41-54
Сочи (862)225-72-31
Ставрополь (8652)20-65-13

Казахстан (772)734-952-31

Сургут (3462)77-98-35
Тверь (4822)63-31-35
Томск (3822)98-41-53
Тула (4872)74-02-29
Тюмень (3452)66-21-18
Ульяновск (8422)24-23-59
Уфа (347)229-48-12
Хабаровск (4212)92-98-04
Челябинск (351)202-03-61
Череповец (8202)49-02-64
Ярославль (4852)69-52-93

<http://salicru.nt-rt.ru> || sfc@nt-rt.ru